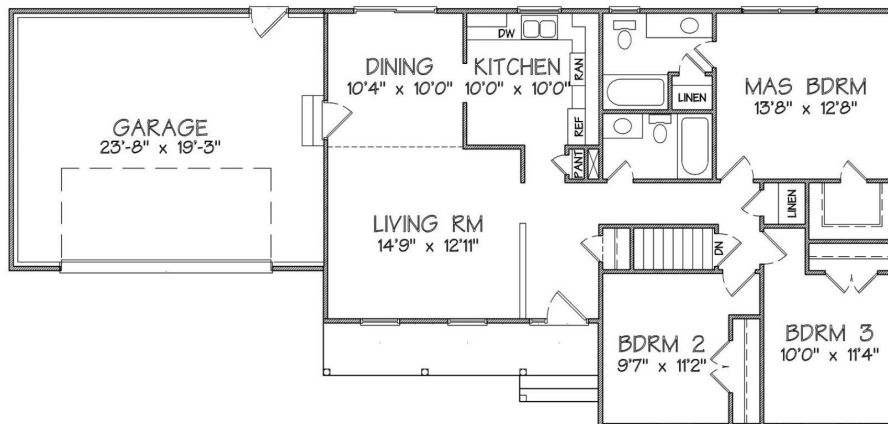


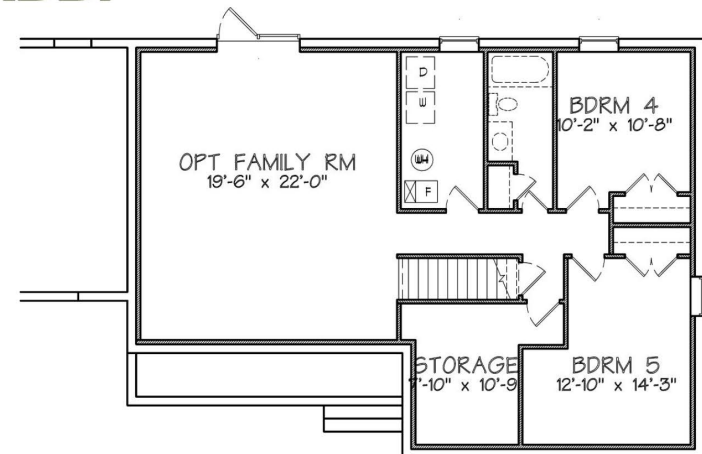
<b>THE ADDI</b>	
<b>STANDARD FEATURES</b>	
2413 SQ. FT. LIVING SPACE 2-CAR GARAGE 3 BEDROOMS 2 BATHS COVERED PORCH	
<b>OPTIONAL BASEMENT FEATURES</b>	
2 BEDROOMS 1 BATH FINISHED FAMILY ROOM	
<b>OUTSIDE DIMENSIONS</b>	
OVERALL WIDTH	68'-0"
OVERALL DEPTH	32'-0"



## THE ADDI



FLOOR PLAN

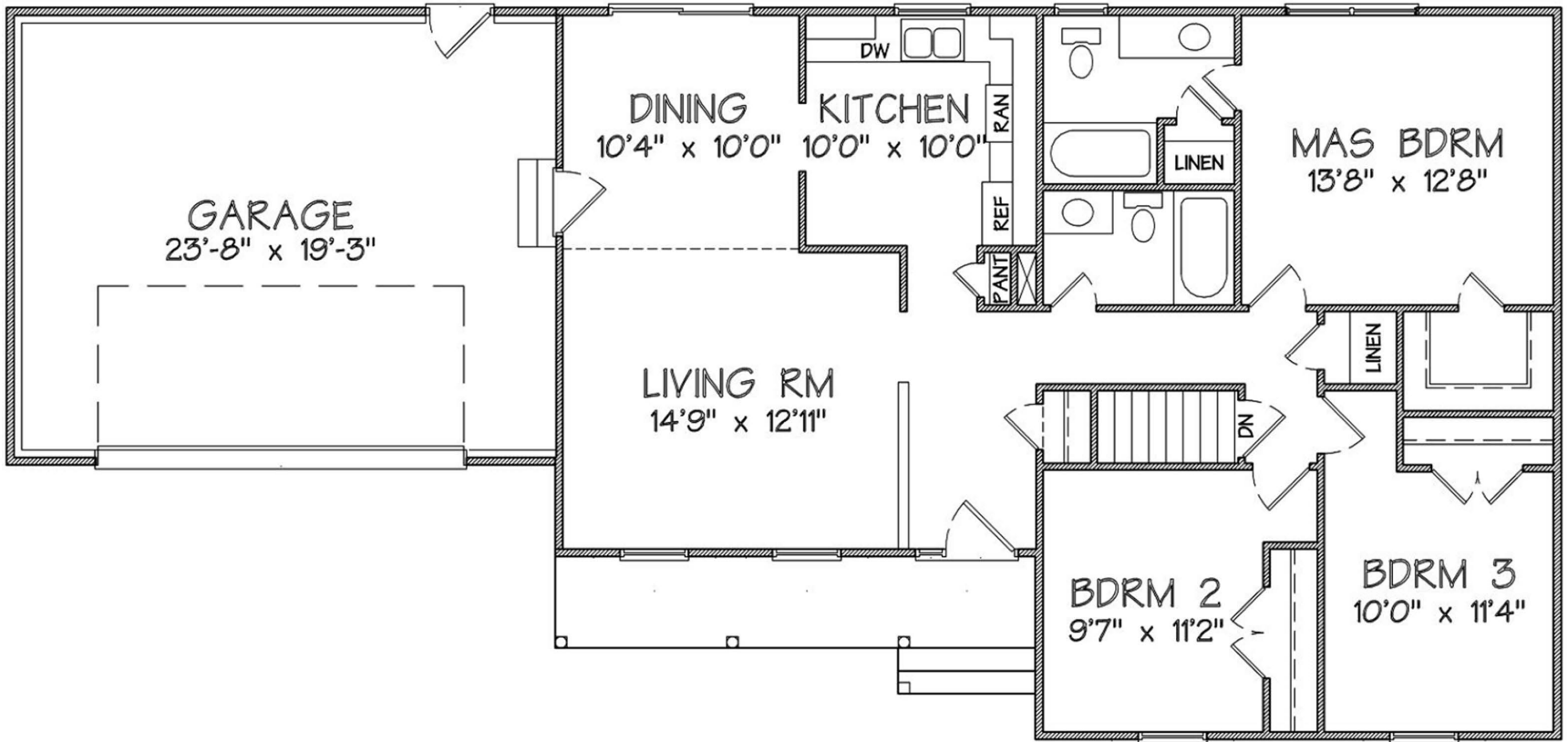


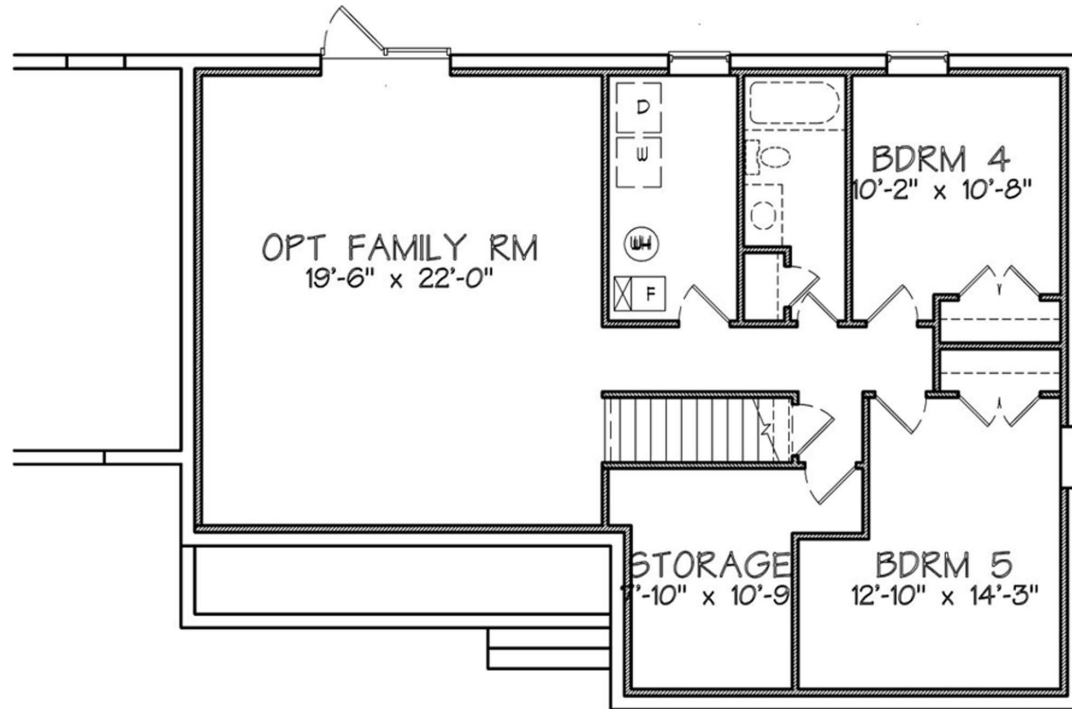
BASEMENT PLAN

**Contact Us: 540-226-9000**

**THE ADDI  
ELEVATION #2**

LOWER LEVEL - 1240 SQ FT  
BASEMENT - 1140 SQ. FT.  
GARAGE - 480 SQ FT





BASEMENT PLAN

Contact Us: 540-226-9000